

bilier

ires
et
s

 **Magnolia** Appartement
Crans Montana



The image shows the interior of an apartment. The ceiling is made of light-colored wooden planks. A mezzanine level with a wooden railing is visible in the background. The floor is covered in large, light-colored square tiles with dark grout. A white cabinet with several drawers is positioned against the wall. A window or glass door is on the right side, providing a view of the outdoors.

Apartment for sale, Route du Simplon 25 (Sierre, Switzerland)

Sierre

Prix de vente : CHF 350'000.-

Présentation

-

Situation:

The building is located in a historic house, in the eastern part of the city of Sierre, in the heart of the Glarey district.

- SBB train station about a 10-minute walk away.
- Bus stop about 10 meters away.
- Close to all amenities.

Commercial premises:

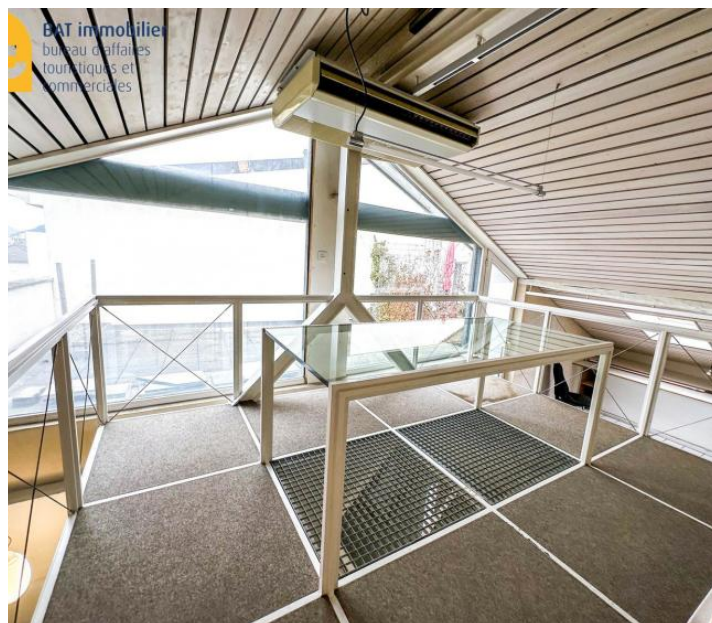
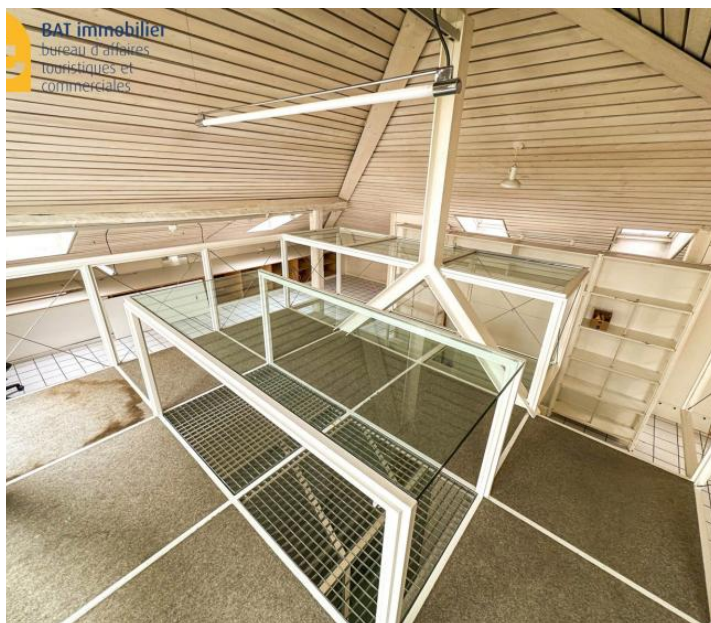
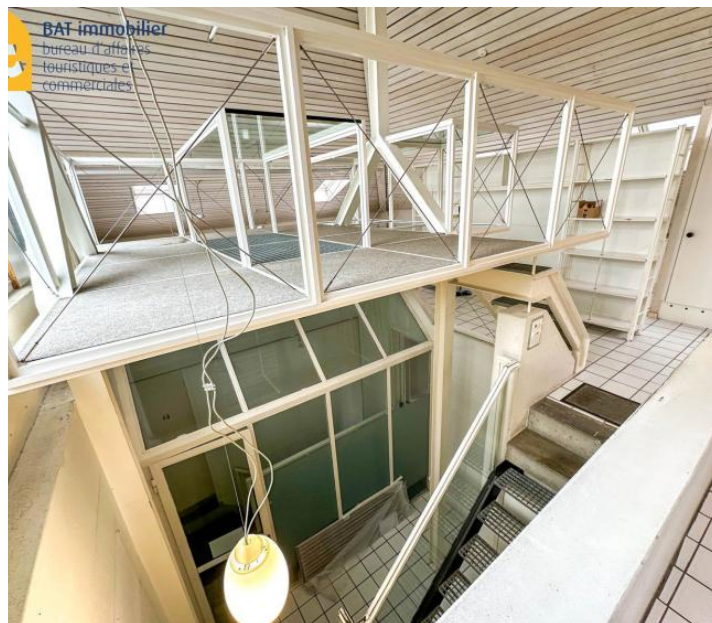
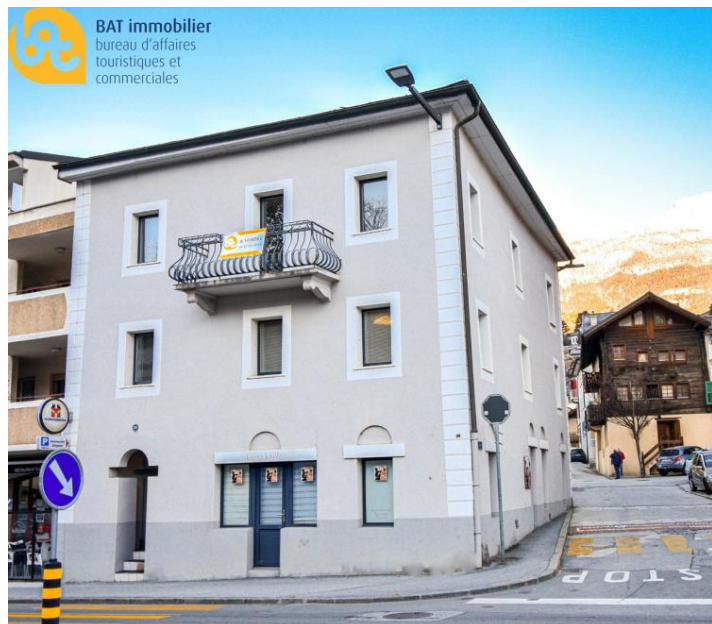
- Entrance hall.
- Separate toilet.
- Open space with access to a large private terrace.
- 2 cellars/storage rooms.
- 1 parking space.

Possibility of transformation into a loft (apartment).

90.00 m²
Surface

2.00
Pièces

Galerie



Informations techniques

Transaction

Type	Appartement
Disponibilité	À convenir

Surfaces

Pièces	2
Surface habitable	90 m ²
